

MOTOMA[®]
Power into the Future

LI-ION/LI-POLYMER BATTERIES



MOTOMA POWER CO., LTD.

3/F, Bldg A, Zone 5, Zhongguan Honghualing Ind Park South, No. 1213, Liuxian Ave,
Nanshan, ShenZhen, China
Tel: +86-755-8373-6206
Fax: +86-755-8294-9256
www.motoma.com
info@motoma.com
motoma96@yahoo.com



Profile

MOTOMA Power, established in 1994, is engaged in battery technology research, development, clean power and commercialisation of battery products based on its Battery Manufacturers' platform, and Close-Partners worldwide. MOTOMA lithium polymer battery technology provides increased safety and reliability over traditional lithium ion battery products. MOTOMA's technology Integrates improved weight, energy density, and cycle life performance. Target applications include electric vehicles, hybrid electric vehicles, power tools, military, medical care, education, telecommunications, electronics, smart grid, solar, wind, geothermal and alternative energy storage. By focusing on continuous improvement of product and investment on commercial promotion, MOTOMA will lead the lithium battery market.

We have gained high reputation among our customers in both domestic and overseas market for our superior and reliable quality products, while offering reasonable and competitive prices with perfect after-sale service. MOTOMA Power sincerely invite you to join our energy business map, to commercialise battery marketing, to rise MOTOMA up with us together.

MOTOMA reliable batteries provide dependable power improving the quality of people life
Our vision: Quality creates brand, service enhances value.

Our mission: MOTOMA, power into the future!



Qualification



Report for safe transport of goods(By Air)



Report for safe transport of goods(By Sea)



UN38.3



SGS62133



KC



IEC62133

Laboratory



HIGH TEMPERATURE BOX & PRE-GRINDING MACHINE



BATTERY TESTING SYSTEM



TEMPERATURE CHAMBER



X-RAY



SALT SPRAY TEST



STEEL NAILS PIERCING



SHORT CIRCUIT TEST

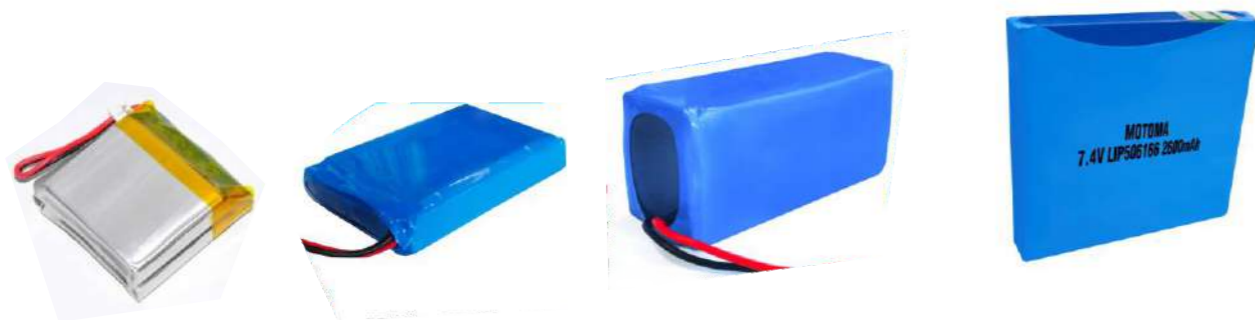


DROP TEST

Lithium Polymer Batteries



Lithium Battery Pack



Workshop



CUTTING MACHINE



TABLET PRESSING MACHINE



AUTOMATIC PRODUCTION LINE



HIGH TEMPERATURE ACTIVATE MACHINE



VACUUM DRYING



SHAPE UP&EDGEFOLD



AUTOMATIC FILLING MACHINE

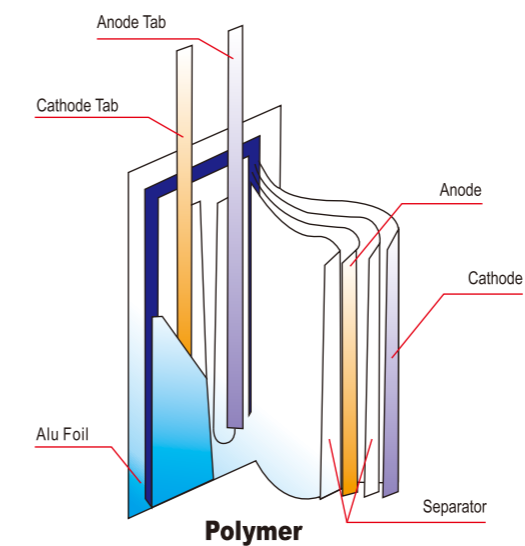


FIXTURE ACTIVATE MACHINE

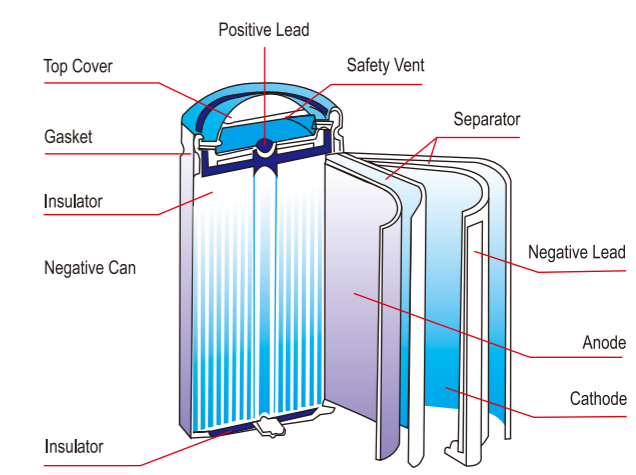


AUTOMATIC SPOT WELDER

Lithium Cell Structure



Polymer



Cylindrical



Lithium Polymer Batteries

No.	Model No.	Dimension(mm)			Capacity (mAh)	Continuous charge current	Continuous discharge current	Burst discharge current	weight (g)	Voltage (V)	Cycle life DOD80%
		T±0.2	W±0.5	H±0.5							
1	LIP601123	6.0	11	23	85	0.5C	0.5C	1C	2	3.7	≥500
2	LIP302020	3.0	20	20	90	0.5C	0.5C	1C	2	3.7	≥500
3	LIP601324	6.0	13	24	120	0.5C	0.5C	1C	3	3.7	≥500
4	LIP552120	5.5	21	20	150	0.5C	0.5C	1C	3	3.7	≥500
5	LIP801818	8.0	18	18	160	0.5C	0.5C	1C	3	3.7	≥500
6	LIP401440	4.0	14	40	200	0.5C	0.5C	1C	4	3.7	≥500
7	LIP651725	6.5	17	25	200	0.5C	0.5C	1C	4	3.7	≥500
8	LIP802023	8.0	20	23	250	0.5C	0.5C	1C	5	3.7	≥500
9	LIP402135	4.0	21	35	250	0.5C	0.5C	1C	5	3.7	≥500
10	LIP394023	3.9	40	23	300	0.5C	0.5C	1C	6	3.7	≥500
11	LIP422040	4.2	20	40	300	0.5C	0.5C	1C	6	3.7	≥500
12	LIP501936	5.0	19	36	300	0.5C	0.5C	1C	6	3.7	≥500
13	LIP522035	5.2	20	35	300	0.5C	0.5C	1C	6	3.7	≥500
14	LIP542232	5.4	22	32	300	0.5C	0.5C	1C	6	3.7	≥500
15	LIP602030	6.0	20	30	300	0.5C	0.5C	1C	6	3.7	≥500
16	LIP582727	5.8	27	27	350	0.5C	0.5C	1C	7	3.7	≥500
17	LIP952323	9.5	23	23	350	0.5C	0.5C	1C	7	3.7	≥500
18	LIP423232	4.2	32	32	400	0.5C	0.5C	1C	8	3.7	≥500
19	LIP442836	4.4	28	36	400	0.5C	0.5C	1C	8	3.7	≥500
20	LIP502240	5.0	22	40	400	0.5C	0.5C	1C	8	3.7	≥500
21	LIP602530	6.0	25	30	400	0.5C	0.5C	1C	8	3.7	≥500
22	LIP442839	4.4	28	39	450	0.5C	0.5C	1C	9	3.7	≥500
23	LIP562535	5.6	25	35	450	0.5C	0.5C	1C	9	3.7	≥500
24	LIP652631	6.5	26	31	450	0.5C	0.5C	1C	8	3.7	≥500
25	LIP701648	7.0	16	48	450	0.5C	0.5C	1C	9	3.7	≥500
26	LIP702134	7.0	21	34	450	0.5C	0.5C	1C	8	3.7	≥500
27	LIP323840	3.2	38	40	500	0.5C	0.5C	1C	9.8	3.7	≥500
28	LIP352070	3.5	20	70	500	0.5C	0.5C	1C	10	3.7	≥500
29	LIP403040	4.0	30	40	500	0.5C	0.5C	1C	9	3.7	≥500
30	LIP552540	5.5	25	40	500	0.5C	0.5C	1C	9	3.7	≥500
31	LIP642832	6.4	28	32	500	0.5C	0.5C	1C	10	3.7	≥500
32	LIP652042	6.5	20	42	500	0.5C	0.5C	1C	9	3.7	≥500
33	LIP852528	8.5	25	28	500	0.5C	0.5C	1C	9	3.7	≥500

No.	Model No.	Dimension(mm)			Capacity (mAh)	Continuous charge current	Continuous discharge current	Burst discharge current	weight (g)	Voltage (V)	Cycle life DOD80%
		T±0.2	W±0.5	H±0.5							
34	LIP383541	3.8	35	41	520	0.5C	0.5C	1C	10	3.7	≥500
35	LIP683030	6.8	30	30	550	0.5C	0.5C	1C	11	3.7	≥500
36	LIP403048	4.0	30	48	600	0.5C	0.5C	1C	11	3.7	≥500
37	LIP602638	6.0	26	38	600	0.5C	0.5C	1C	10	3.7	≥500
38	LIP703030	7.0	30	30	600	0.5C	0.5C	1C	11	3.7	≥500
39	LIP802535	8.0	25	35	650	0.5C	0.5C	1C	12	3.7	≥500
40	LIP942040	9.4	20	40	650	0.5C	0.5C	1C	12	3.7	≥500
41	LIP403048	4.0	30	48	650	0.5C	0.5C	1C	12	3.7	≥500
42	LIP403742	4.0	37	42	650	0.5C	0.5C	1C	12	3.7	≥500
43	LIP434138	4.3	41	38	700	0.5C	0.5C	1C	13	3.7	≥500
44	LIP602058	6.0	20	58	700	0.5C	0.5C	1C	13	3.7	≥500
45	LIP702050	7.0	20	50	700	0.5C	0.5C	1C	13	3.7	≥500
46	LIP384045	3.8	40	45	750	0.5C	0.5C	1C	14	3.7	≥500
47	LIP553243	5.5	32	43	750	0.5C	0.5C	1C	14	3.7	≥500
48	LIP602745	6.0	27	45	750	0.5C	0.5C	1C	140	3.7	≥500
49	LIP682447	6.8	24	47	750	0.5C	0.5C	1C	14	3.7	≥500
50	LIP702641	7.0	26	41	750	0.5C	0.5C	1C	14	3.7	≥500
51	LIP902145	9.0	21	45	750	0.5C	0.5C	1C	14	3.7	≥500
52	LIP403062	4.0	30	62	800	0.5C	0.5C	1C	15	3.7	≥500
53	LIP903033	9.0	30	33	800	0.5C	0.5C	1C	15	3.7	≥500
54	LIP112435	11.0	24	35	850	0.5C	0.5C	1C	15	3.7	≥500
55	LIP623045	6.2	30	45	850	0.5C	0.5C	1C	15	3.7	≥500
56	LIP324555	3.2	45	55	900	0.5C	0.5C	1C	17	3.7	≥500
57	LIP402873	4.0	28	73	900	0.5C	0.5C	1C	16	3.7	≥500
58	LIP432772	4.3	27	72	900	0.5C	0.5C	1C	17	3.7	≥500
59	LIP503450	5.0	34	50	900	0.5C	0.5C	1C	17	3.7	≥500
60	LIP702256	7.0	22	56	900	0.5C	0.5C	1C	16	3.7	≥500
61	LIP722453	7.2	24	53	900	0.5C	0.5C	1C	16	3.7	≥500
62	LIP053450	0.5	34	50	900	0.5C	0.5C	1C	17	3.7	≥500
63	LIP653443	6.5	34	43	950	0.5C	0.5C	1C	18	3.7	≥500
64	LIP733043	7.3	30	43	950	0.5C	0.5C	1C	17	3.7	≥500
65	LIP903036	9.0	30	36	950	0.5C	0.5C	1C	17	3.7	≥500
66	LIP624037	6.2	40	37	950	0.5C	0.5C	1C	17	3.7	≥500
67	LIP254086	2.5	40	86	1000	0.5C	0.5C	1C	20	3.7	≥500
68	LIP503258	5.0	32	58	1000	0.5C	0.5C	1C	19	3.7	≥500

No.	Model No.	Dimension(mm)			Capacity (mAh)	Continuous charge current	Continuous discharge current	Burst discharge current	weight (g)	Voltage (V)	Cycle life DOD80%
		T±0.2	W±0.5	H±0.5							
69	LIP803040	8.0	30	40	1000	0.5C	0.5C	1C	18	3.7	≥500
70	LIP3030100	3.0	30	100	1000	0.5C	0.5C	1C	19	3.7	≥500
71	LIP503060	5.0	30	60	1000	0.5C	0.5C	1C	18	3.7	≥500
72	LIP423366	4.2	33	66	1050	0.5C	0.5C	1C	19	3.7	≥500
73	LIP552096	5.5	20	96	1050	0.5C	0.5C	1C	20	3.7	≥500
74	LIP593448	5.9	34	48	1050	0.5C	0.5C	1C	18	3.7	≥500
75	LIP603350	6.0	33	50	1050	0.5C	0.5C	1C	19	3.7	≥500
76	LIP742263	7.4	22	63	1050	0.5C	0.5C	1C	19	3.7	≥500
77	LIP112739	11.0	27	39	1100	0.5C	0.5C	1C	20	3.7	≥500
78	LIP403765	4.0	37	65	1100	0.5C	0.5C	1C	20	3.7	≥500
79	LIP603845	6.0	38	45	1100	0.5C	0.5C	1C	20	3.7	≥500
80	LIP604041	6.0	40	41	1100	0.5C	0.5C	1C	19	3.7	≥500
81	LIP324272	3.2	42	72	1150	0.5C	0.5C	1C	22	3.7	≥500
82	LIP633745	6.3	37	45	1150	0.5C	0.5C	1C	20	3.7	≥500
83	LIP123333	12.0	33	33	1200	0.5C	0.5C	1C	22	3.7	≥500
84	LIP385053	3.8	50	53	1200	0.5C	0.5C	1C	22	3.7	≥500
85	LIP554050	5.5	40	50	1200	0.5C	0.5C	1C	22	3.7	≥500
86	LIP702562	7.0	25	62	1200	0.5C	0.5C	1C	21	3.7	≥500
87	LIP902554	9.0	25	54	1200	0.5C	0.5C	1C	22	3.7	≥500
88	LIP363392	3.6	33	92	1250	0.5C	0.5C	1C	24	3.7	≥500
89	LIP853838	8.5	38	38	1250	0.5C	0.5C	1C	23	3.7	≥500
90	LIP103636	10.0	36	36	1300	0.5C	0.5C	1C	23	3.7	≥500
91	LIP363491	3.6	34	91	1300	0.5C	0.5C	1C	24	3.7	≥500
92	LIP423282	4.2	32	82	1300	0.5C	0.5C	1C	24	3.7	≥500
93	LIP484060	4.8	40	60	1300	0.5C	0.5C	1C	23	3.7	≥500
94	LIP485149	4.8	51	49	1300	0.5C	0.5C	1C	24	3.7	≥500
95	LIP534548	5.3	45	48	1300	0.5C	0.5C	1C	23	3.7	≥500
96	LIP643455	6.4	34	55	1300	0.5C	0.5C	1C	24	3.7	≥500
97	LIP404762	4.0	47	62	1350	0.5C	0.5C	1C	25	3.7	≥500
98	LIP654048	6.5	40	48	1350	0.5C	0.5C	1C	24	3.7	≥500
99	LIP692864	6.9	28	64	1350	0.5C	0.5C	1C	25	3.7	≥500
100	LIP702282	7.0	22	82	1350	0.5C	0.5C	1C	25	3.7	≥500
101	LIP083446	0.8	34	46	1350	0.5C	0.5C	1C	24	3.7	≥500
102	LIP383498	3.8	34	98	1400	0.5C	0.5C	1C	26	3.7	≥500
103	LIP386946	3.8	69	46	1400	0.5C	0.5C	1C	26	3.7	≥500

No.	Model No.	Dimension(mm)			Capacity (mAh)	Continuous charge current	Continuous discharge current	Burst discharge current	weight (g)	Voltage (V)	Cycle life DOD80%
		T±0.2	W±0.5	H±0.5							
104	LIP394075	3.9	40	75	1400	0.5C	0.5C	1C	26	3.7	≥500
105	LIP435453	4.3	54	53	1400	0.5C	0.5C	1C	26	3.7	≥500
106	LIP484855	4.8	48	55	1400	0.5C	0.5C	1C	26	3.7	≥500
107	LIP523565	5.2	35	65	1400	0.5C	0.5C	1C	25	3.7	≥500
108	LIP553860	5.5	38	60	1400	0.5C	0.5C	1C	25	3.7	≥500
109	LIP3430128	3.4	30	128	1400	0.5C	0.5C	1C	27	3.7	≥500
110	LIP806468	8.0	64	68	1400	0.5C	0.5C	1C	26	3.7	≥500
111	LIP553470	5.5	34	70	1450	0.5C	0.5C	1C	26	3.7	≥500
112	LIP732384	7.3	23	84	1450	0.5C	0.5C	1C	26	3.7	≥500
113	LIP603759	6.0	37	59	1500	0.5C	0.5C	1C	27	3.7	≥500
114	LIP503480	5.0	34	80	1550	0.5C	0.5C	1C	29	3.7	≥500
115	LIP922955	9.2	29	55	1550	0.5C	0.5C	1C	28	3.7	≥500
116	LIP103150	10.0	31	50	1600	0.5C	0.5C	1C	29	3.7	≥500
117	LIP375273	3.7	52	73	1600	0.5C	0.5C	1C	30	3.7	≥500
118	LIP554065	5.5	40	65	1600	0.5C	0.5C	1C	29	3.7	≥500
119	LIP603272	6.0	32	72	1600	0.5C	0.5C	1C	28	3.7	≥500
120	LIP843257	8.4	32	57	1600	0.5C	0.5C	1C	29	3.7	≥500
121	LIP123539	12.0	35	39	1650	0.5C	0.5C	1C	30	3.7	≥500
122	LIP345077	3.4	50	77	1650	0.5C	0.5C	1C	30	3.7	≥500
123	LIP345669	3.4	56	69	1650	0.5C	0.5C	1C	30	3.7	≥500
124	LIP103448	10.0	34	48	1700	0.5C	0.5C	1C	31	3.7	≥500
125	LIP112560	11.0	25	60	1700	0.5C	0.5C	1C	30	3.7	≥500
126	LIP505060	5.0	50	60	1700	0.5C	0.5C	1C	32	3.7	≥500
127	LIP822578	8.2	25	78	1700	0.5C	0.5C	1C	31	3.7	≥500
128	LIP5030100	5.0	30	100	1700	0.5C	0.5C	1C	32	3.7	≥500
129	LIP306072	3.0	60	72	1700	0.5C	0.5C	1C	31	3.7	≥500
130	LIP652497	6.5	24	97	1700	0.5C	0.5C	1C	32	3.7	≥500
131	LIP683566	6.8	35	66	1750	0.5C	0.5C	1C	32	3.7	≥500
132	LIP703562	7.0	35	62	1750	0.5C	0.5C	1C	31	3.7	≥500
133	LIP883256	8.8	32	56	1750	0.5C	0.5C	1C	31	3.7	≥500
134	LIP104043	10.0	40	43	1800	0.5C	0.5C	1C	32	3.7	≥500
135	LIP306281	3.0	62	81	1800	0.5C	0.5C	1C	33	3.7	≥500
136	LIP504567	5.0	45	67	1800	0.5C	0.5C	1C	22	3.7	≥500
137	LIP545256	5.4	52	56	1800	0.5C	0.5C	1C	33	3.7	≥500
138	LIP853754	8.5	37	54	1850	0.5C	0.5C	1C	34	3.7	≥500

No.	Model No.	Dimension(mm)			Capacity (mAh)	Continuous charge current	Continuous discharge current	Burst discharge current	weight (g)	Voltage (V)	Cycle life DOD80%
		T±0.2	W±0.5	H±0.5							
139	LIP903653	9.0	36	53	1850	0.5C	0.5C	1C	33	3.7	≥500
140	LIP3230160	3.2	30	160	1850	0.5C	0.5C	1C	34	3.7	≥500
141	LIP3545105	3.5	45	105	1850	0.5C	0.5C	1C	34	3.7	≥500
142	LIP123840	12.0	38	40	1900	0.5C	0.5C	1C	34	3.7	≥500
143	LIP902294	9.0	22	94	1900	0.5C	0.5C	1C	34	3.7	≥500
144	LIP754354	7.5	43	54	1950	0.5C	0.5C	1C	35	3.7	≥500
145	LIP375680	3.7	56	80	2000	0.5C	0.5C	1C	36	3.7	≥500
146	LIP385774	3.8	57	74	2000	0.5C	0.5C	1C	36	3.7	≥500
147	LIP434585	4.3	45	85	2000	0.5C	0.5C	1C	36	3.7	≥500
148	LIP455662	4.5	56	62	2000	0.5C	0.5C	1C	34	3.7	≥500
149	LIP553980	5.5	39	80	2000	0.5C	0.5C	1C	36	3.7	≥500
150	LIP584565	5.8	45	65	2000	0.5C	0.5C	1C	35	3.7	≥500
151	LIP603093	6.0	30	93	2000	0.5C	0.5C	1C	35	3.7	≥500
152	LIP603876	6.0	38	76	2000	0.5C	0.5C	1C	37	3.7	≥500
153	LIP683086	6.8	30	86	2000	0.5C	0.5C	1C	36	3.7	≥500
154	LIP692889	6.9	28	89	2000	0.5C	0.5C	1C	36	3.7	≥500
155	LIP704950	7.0	49	50	2000	0.5C	0.5C	1C	35	3.7	≥500
156	LIP754060	7.5	40	60	2000	0.5C	0.5C	1C	36	3.7	≥500
157	LIP783467	7.8	34	67	2000	0.5C	0.5C	1C	36	3.7	≥500
158	LIP864250	8.6	42	50	2000	0.5C	0.5C	1C	35	3.7	≥500
159	LIP904248	9.0	42	48	2000	0.5C	0.5C	1C	35	3.7	≥500
160	LIP3053107	3.0	53	107	2000	0.5C	0.5C	1C	39	3.7	≥500
161	LIP306290	3.0	62	90	2000	0.5C	0.5C	1C	37	3.7	≥500
162	LIP405085	4.0	50	85	2000	0.5C	0.5C	1C	37	3.7	≥500
163	LIP534868	5.3	48	68	2050	0.5C	0.5C	1C	37	3.7	≥500
164	LIP385085	3.8	50	85	2100	0.5C	0.5C	1C	37	3.7	≥500
165	LIP455080	4.5	50	80	2100	0.5C	0.5C	1C	38	3.7	≥500
166	LIP555065	5.5	50	65	2100	0.5C	0.5C	1C	37	3.7	≥500
167	LIP604566	6.0	45	66	2100	0.5C	0.5C	1C	38	3.7	≥500
168	LIP702796	7.0	27	96	2100	0.5C	0.5C	1C	37	3.7	≥500
169	LIP743374	7.4	33	74	2100	0.5C	0.5C	1C	37	3.7	≥500
170	LIP123450	12.0	34	50	2200	0.5C	0.5C	1C	39	3.7	≥500
171	LIP306595	3.0	65	95	2200	0.5C	0.5C	1C	41	3.7	≥500
172	LIP435478	4.3	54	78	2200	0.5C	0.5C	1C	40	3.7	≥500
173	LIP554088	5.5	40	88	2200	0.5C	0.5C	1C	40	3.7	≥500

No.	Model No.	Dimension(mm)			Capacity (mAh)	Continuous charge current	Continuous discharge current	Burst discharge current	weight (g)	Voltage (V)	Cycle life DOD80%
		T±0.2	W±0.5	H±0.5							
174	LIP504094	5.0	40	94	2250	0.5C	0.5C	1C	41	3.7	≥500
175	LIP604275	6.0	42	75	2250	0.5C	0.5C	1C	41	3.7	≥500
176	LIP495968	4.9	59	68	2300	0.5C	0.5C	1C	40	3.7	≥500
177	LIP803375	8.0	33	75	2300	0.5C	0.5C	1C	41	3.7	≥500
178	LIP4534135	4.5	34	135	2300	0.5C	0.5C	1C	43	3.7	≥500
179	LIP3049119	3.0	49	119	2300	0.5C	0.5C	1C	43	3.7	≥500
180	LIP554288	5.5	42	88	2350	0.5C	0.5C	1C	43	3.7	≥500
181	LIP307095	3.0	70	95	2400	0.5C	0.5C	1C	44	3.7	≥500
182	LIP904356	9.0	43	56	2400	0.5C	0.5C	1C	43	3.7	≥500
183	LIP103468	10.0	34	68	2500	0.5C	0.5C	1C	46	3.7	≥500
184	LIP114645	11.0	46	45	2500	0.5C	0.5C	1C	44	3.7	≥500
185	LIP385593	3.8	55	93	2500	0.5C	0.5C	1C	45	3.7	≥500
186	LIP606058	6.0	60	58	2500	0.5C	0.5C	1C	44	3.7	≥500
187	LIP635165	6.3	51	65	2500	0.5C	0.5C	1C	45	3.7	≥500
188	LIP804560	8.0	45	60	2500	0.5C	0.5C	1C	45	3.7	≥500
189	LIP902988	9.0	29	88	2500	0.5C	0.5C	1C	45	3.7	≥500
190	LIP585075	5.8	50	75	2600	0.5C	0.5C	1C	46	3.7	≥500
191	LIP804265	8.0	42	65	2600	0.5C	0.5C	1C	46	3.7	≥500
192	LIP3048147	3.0	48	147	2600	0.5C	0.5C	1C	47	3.7	≥500
193	LIP5440104	5.4	40	104	2600	0.5C	0.5C	1C	48	3.7	≥500
194	LIP104850	10.0	48	50	2700	0.5C	0.5C	1C	48	3.7	≥500
195	LIP288785	2.8	87	85	2700	0.5C	0.5C	1C	49	3.7	≥500
196	LIP705360	7.0	53	60	2700	0.5C	0.5C	1C	70	3.7	≥500
197	LIP804169	8.0	41	69	2700	0.5C	0.5C	1C	48	3.7	≥500
198	LIP804465	8.0	44	65	2700	0.5C	0.5C	1C	48	3.7	≥500
199	LIP854759	8.5	47	59	2700	0.5C	0.5C	1C	48	3.7	≥500
200	LIP655364	6.5	53	64	2700	0.5C	0.5C	1C	49	3.7	≥500
201	LIP327293	3.2	72	93	2750	0.5C	0.5C	1C	50	3.7	≥500
202	LIP104358	10.0	43	58	2800	0.5C	0.5C	1C	50	3.7	≥500
203	LIP585178	5.8	51	78	2800	0.5C	0.5C	1C	49	3.7	≥500
204	LIP753496	7.5	34	96	2800	0.5C	0.5C	1C	51	3.7	≥500
205	LIP804269	8.0	42	69	2800	0.5C	0.5C	1C	49	3.7	≥500
206	LIP504797	5.0	47	97	2800	0.5C	0.5C	1C	51	3.7	≥500
207	LIP534597	5.3	45	97	2850	0.5C	0.5C	1C	52	3.7	≥500
208	LIP884759	8.8	47	59	2850	0.5C	0.5C	1C	51	3.7	≥500

No.	Model No.	Dimension(mm)			Capacity (mAh)	Continuous charge current	Continuous discharge current	Burst discharge current	weight (g)	Voltage (V)	Cycle life DOD80%
		T±0.2	W±0.5	H±0.5							
209	LIP3078100	3.0	78	100	2850	0.5C	0.5C	1C	52	3.7	≥500
210	LIP475690	4.7	56	90	2900	0.5C	0.5C	1C	52	3.7	≥500
211	LIP2957137	2.9	57	137	2900	0.5C	0.5C	1C	52	3.7	≥500
212	LIP604394	6.0	43	94	2950	0.5C	0.5C	1C	53	3.7	≥500
213	LIP357093	3.5	70	93	3000	0.5C	0.5C	1C	53	3.7	≥500
214	LIP665571	6.6	55	71	3000	0.5C	0.5C	1C	54	3.7	≥500
215	LIP705565	7.0	55	65	3000	0.5C	0.5C	1C	54	3.7	≥500
216	LIP865062	8.6	50	62	3000	0.5C	0.5C	1C	55	3.7	≥500
217	LIP3370103	3.3	70	103	3000	0.5C	0.5C	1C	54	3.7	≥500
218	LIP3652135	3.6	52	135	3000	0.5C	0.5C	1C	57	3.7	≥500
219	LIP4549118	4.5	49	118	3000	0.5C	0.5C	1C	56	3.7	≥500
220	LIP605575	6.0	55	75	3100	0.5C	0.5C	1C	54	3.7	≥500
221	LIP904764	9.0	47	64	3100	0.5C	0.5C	1C	55	3.7	≥500
222	LIP2870121	2.8	70	121	3100	0.5C	0.5C	1C	57	3.7	≥500
223	LIP103483	10.0	34	83	3200	0.5C	0.5C	1C	57	3.7	≥500
224	LIP3455140	3.4	55	140	3200	0.5C	0.5C	1C	58	3.7	≥500
225	LIP3565120	3.5	65	120	3200	0.5C	0.5C	1C	58	3.7	≥500
226	LIP4555107	4.5	55	107	3200	0.5C	0.5C	1C	58	3.7	≥500
227	LIP116045	11.0	60	45	3300	0.5C	0.5C	1C	60	3.7	≥500
228	LIP407292	4.0	72	92	3300	0.5C	0.5C	1C	59	3.7	≥500
229	LIP656170	6.5	61	70	3300	0.5C	0.5C	1C	59	3.7	≥500
230	LIP753898	7.5	38	98	3300	0.5C	0.5C	1C	59	3.7	≥500
231	LIP904471	9.0	44	71	3300	0.5C	0.5C	1C	58	3.7	≥500
232	LIP954568	9.5	45	68	3300	0.5C	0.5C	1C	58	3.7	≥500
233	LIP2584105	2.5	84	105	3300	0.5C	0.5C	1C	59	3.7	≥500
234	LIP3476105	3.4	76	105	3300	0.5C	0.5C	1C	60	3.7	≥500
235	LIP605484	6.0	54	84	3400	0.5C	0.5C	1C	60	3.7	≥500
236	LIP754682	7.5	46	82	3400	0.5C	0.5C	1C	60	3.7	≥500
237	LIP3669110	3.6	69	110	3400	0.5C	0.5C	1C	63	3.7	≥500
238	LIP805070	8.0	50	70	3400	0.5C	0.5C	1C	61	3.7	≥500
239	LIP855068	8.5	50	68	3450	0.5C	0.5C	1C	61	3.7	≥500
240	LIP955656	9.5	56	56	3500	0.5C	0.5C	1C	62	3.7	≥500
241	LIP586281	5.8	62	81	3550	0.5C	0.5C	1C	63	3.7	≥500
242	LIP944084	9.4	40	84	3600	0.5C	0.5C	1C	64	3.7	≥500
243	LIP3555157	3.5	55	157	3600	0.5C	0.5C	1C	65	3.7	≥500

No.	Model No.	Dimension(mm)			Capacity (mAh)	Continuous charge current	Continuous discharge current	Burst discharge current	weight (g)	Voltage (V)	Cycle life DOD80%
		T±0.2	W±0.5	H±0.5							
244	LIP3950158	3.9	50	158	3600	0.5C	0.5C	1C	65	3.7	≥500
245	LIP676173	6.7	61	73	3650	0.5C	0.5C	1C	65	3.7	≥500
246	LIP407696	4.0	76	96	3700	0.5C	0.5C	1C	66	3.7	≥500
247	LIP984473	9.8	44	73	3700	0.5C	0.5C	1C	66	3.7	≥500
248	LIP993689	9.9	36	89	3700	0.5C	0.5C	1C	66	3.7	≥500
249	LIP3666125	3.6	66	125	3700	0.5C	0.5C	1C	69	3.7	≥500
250	LIP3853155	3.8	53	155	3700	0.5C	0.5C	1C	68	3.7	≥500
251	LIP30100100	3.0	100	100	3700	0.5C	0.5C	1C	67	3.7	≥500
252	LIP864187	8.6	41	87	3800	0.5C	0.5C	1C	64	3.7	≥500
253	LIP964870	9.6	48	70	3800	0.5C	0.5C	1C	67	3.7	≥500
254	LIP4258120	4.2	58	120	3800	0.5C	0.5C	1C	68	3.7	≥500
255	LIP329697	3.2	96	97	3900	0.5C	0.5C	1C	70	3.7	≥500
256	LIP607670	6.0	76	70	4000	0.5C	0.5C	1C	71	3.7	≥500
257	LIP704698	7.0	46	98	4000	0.5C	0.5C	1C	70	3.7	≥500
258	LIP855078	8.5	50	78	4000	0.5C	0.5C	1C	71	3.7	≥500
259	LIP9027147	9.0	27	147	4000	0.5C	0.5C	1C	72	3.7	≥500
260	LIP695486	6.9	54	86	4100	0.5C	0.5C	1C	72	3.7	≥500
261	LIP855080	8.5	50	80	4100	0.5C	0.5C	1C	73	3.7	≥500
262	LIP3560165	3.5	60	165	4100	0.5C	0.5C	1C	75	3.7	≥500
263	LIP905572	9.0	55	72	4200	0.5C	0.5C	1C	75	3.7	≥500
264	LIP9834105	9.8	34	105	4200	0.5C	0.5C	1C	74	3.7	≥500
265	LIP4066125	4.0	66	125	4200	0.5C	0.5C	1C	75	3.7	≥500
266	LIP556498	5.5	64	98	4300	0.5C	0.5C	1C	76	3.7	≥500
267	LIP805775	8.0	57	75	4300	0.5C	0.5C	1C	76	3.7	≥500
268	LIP2890128	2.8	90	128	4300	0.5C	0.5C	1C	79	3.7	≥500
269	LIP3690105	3.6	90	105	4300	0.5C	0.5C	1C	79	3.7	≥500
270	LIP3863147	3.8	63	147	4300	0.5C	0.5C	1C	78	3.7	≥500
271	LIP3872128	3.8	72	128	4300	0.5C	0.5C	1C	78	3.7	≥500
272	LIP5464100	5.4	64	100	4300	0.5C	0.5C	1C	77	3.7	≥500
273	LIP4558125	4.5	58	125	4300	0.5C	0.5C	1C	77	3.7	≥500
274	LIP776669	7.7	66	69	4400	0.5C	0.5C	1C	77	3.7	≥500
275	LIP4865115	4.8	65	115	4400	0.5C	0.5C	1C	79	3.7	≥500
276	LIP379998	3.7	99	98	4500	0.5C	0.5C	1C	81	3.7	≥500
277	LIP488095	4.8	80	95	4500	0.5C	0.5C	1C	81	3.7	≥500
278	LIP815581	8.1	55	81	4500	0.5C	0.5C	1C	79	3.7	≥500

No.	Model No.	Dimension(mm)			Capacity (mAh)	Continuous charge current	Continuous discharge current	Burst discharge current	weight (g)	Voltage (V)	Cycle life DOD80%
		T±0.2	W±0.5	H±0.5							
279	LIP855085	8.5	50	85	4500	0.5C	0.5C	1C	78	3.7	≥500
280	LIP3670140	3.6	70	140	4500	0.5C	0.5C	1C	82	3.7	≥500
281	LIP3970125	3.9	70	125	4500	0.5C	0.5C	1C	80	3.7	≥500
282	LIP4090100	4.0	90	100	4500	0.5C	0.5C	1C	82	3.7	≥500
283	LIP3067180	3.0	67	180	4500	0.5C	0.5C	1C	83	3.7	≥500
284	LIP1031130	10.0	31	130	4600	0.5C	0.5C	1C	83	3.7	≥500
285	LIP4663123	4.6	63	123	4600	0.5C	0.5C	1C	83	3.7	≥500
286	LIP7048110	7.0	48	110	4600	0.5C	0.5C	1C	83	3.7	≥500
287	LIP626398	6.2	63	98	4700	0.5C	0.5C	1C	84	3.7	≥500
288	LIP2890137	2.8	90	137	4700	0.5C	0.5C	1C	85	3.7	≥500
289	LIP4063147	4.0	63	147	4700	0.5C	0.5C	1C	85	3.7	≥500
290	LIP3189127	3.1	89	127	4750	0.5C	0.5C	1C	86	3.7	≥500
291	LIP507698	5.0	76	98	4800	0.5C	0.5C	1C	85	3.7	≥500
292	LIP626696	6.2	66	96	4800	0.5C	0.5C	1C	86	3.7	≥500
293	LIP5076100	5.0	76	100	4800	0.5C	0.5C	1C	87	3.7	≥500
294	LIP7054100	7.0	54	100	4800	0.5C	0.5C	1C	85	3.7	≥500
295	LIP105575	10.0	55	75	4900	0.5C	0.5C	1C	88	3.7	≥500
296	LIP815195	8.1	51	95	4900	0.5C	0.5C	1C	87	3.7	≥500
297	LIP3090145	3.0	90	145	4900	0.5C	0.5C	1C	90	3.7	≥500
298	LIP8535138	8.5	35	138	4900	0.5C	0.5C	1C	88	3.7	≥500
299	LIP3488127	3.4	88	127	5000	0.5C	0.5C	1C	85	3.7	≥500
300	LIP7045125	7.0	45	125	5000	0.5C	0.5C	1C	89	3.7	≥500
301	LIP686298	6.8	62	98	5200	0.5C	0.5C	1C	92	3.7	≥500
302	LIP706490	7.0	64	90	5200	0.5C	0.5C	1C	91	3.7	≥500
303	LIP25100155	2.5	100	155	5200	0.5C	0.5C	1C	95	3.7	≥500
304	LIP806580	8.0	65	80	5300	0.5C	0.5C	1C	93	3.7	≥500
305	LIP6050140	6.0	50	140	5300	0.5C	0.5C	1C	96	3.7	≥500
306	LIP805989	8.0	59	89	5400	0.5C	0.5C	1C	95	3.7	≥500
307	LIP3095150	3.0	95	150	5400	0.5C	0.5C	1C	98	3.7	≥500
308	LIP116168	11.0	61	68	5500	0.5C	0.5C	1C	97	3.7	≥500
309	LIP856978	8.5	69	78	5500	0.5C	0.5C	1C	101	3.7	≥500
310	LIP905591	9.0	55	91	5500	0.5C	0.5C	1C	97	3.7	≥500
311	LIP30105140	3.0	105	140	5500	0.5C	0.5C	1C	102	3.7	≥500
312	LIP115282	11.0	52	82	5600	0.5C	0.5C	1C	100	3.7	≥500
313	LIP1138122	11.0	38	112	5600	0.5C	0.5C	1C	99	3.7	≥500

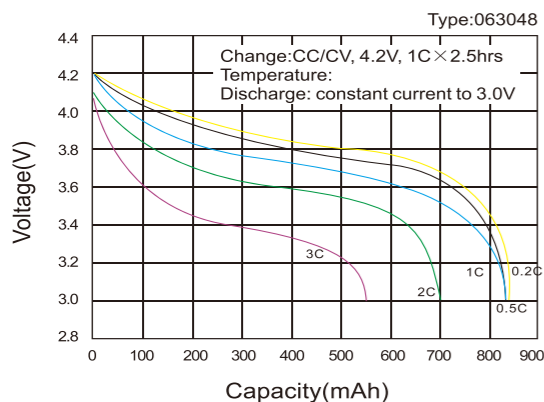
No.	Model No.	Dimension(mm)			Capacity (mAh)	Continuous charge current	Continuous discharge current	Burst discharge current	weight (g)	Voltage (V)	Cycle life DOD80%
		T±0.2	W±0.5	H±0.5							
314	LIP6266110	6.2	66	110	5600	0.5C	0.5C	1C	100	3.7	≥500
315	LIP4695100	4.6	95	100	5700	0.5C	0.5C	1C	102	3.7	≥500
316	LIP7249135	7.2	49	135	5800	0.5C	0.5C	1C	105	3.7	≥500
317	LIP2799158	2.7	99	158	6000	0.5C	0.5C	1C	109	3.7	≥500
318	LIP9053100	9.0	53	100	6000	0.5C	0.5C	1C	103	3.7	≥500
319	LIP807085	8.0	70	85	6100	0.5C	0.5C	1C	108	3.7	≥500
320	LIP126368	12.0	63	68	6200	0.5C	0.5C	1C	110	3.7	≥500
321	LIP588797	5.8	87	97	6200	0.5C	0.5C	1C	110	3.7	≥500
322	LIP6060135	6.0	60	135	6200	0.5C	0.5C	1C	112	3.7	≥500
323	LIP7557120	7.5	57	120	6500	0.5C	0.5C	1C	115	3.7	≥500
324	LIP6267130	6.2	67	130	6800	0.5C	0.5C	1C	121	3.7	≥500
325	LIP126475	12.0	64	75	7100	0.5C	0.5C	1C	125	3.7	≥500
326	LIP6075123	6.0	75	123	7200	0.5C	0.5C	1C	129	3.7	≥500

Applications

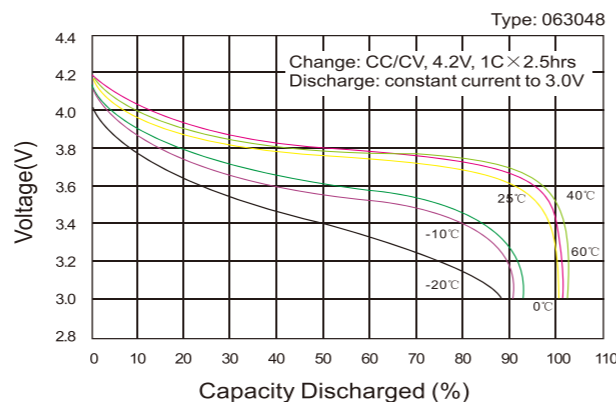


Performance

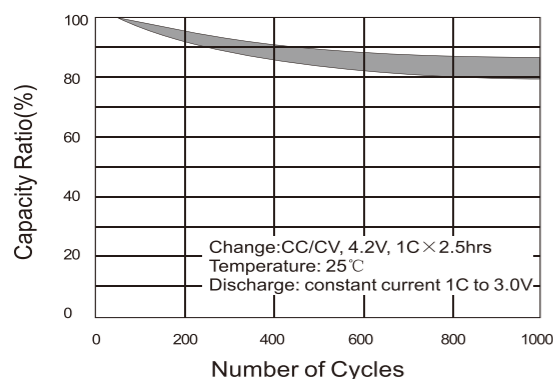
Discharge Characteristics at Various Currents



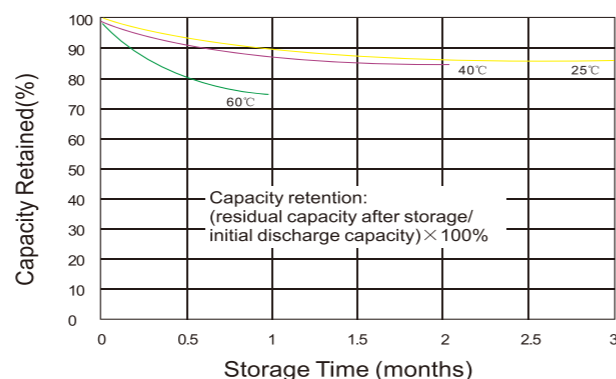
Temperature Characteristics



Cycle Characteristics

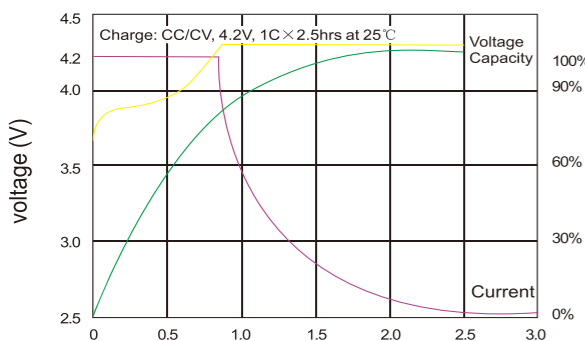


Storage Characteristics



Charge Method & Protection Circuit

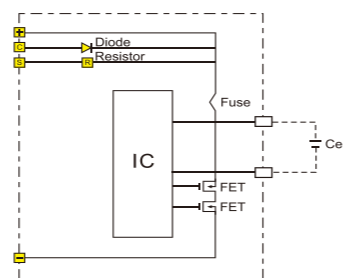
Charge Characteristics



Charge method

CC/CV: Constant Current / Constant Voltage
Charge Voltage: 4.2 0.049V/Cell
Charge Time: 2.5h for 1CmA, 5h for 0.5CmA

Protection circuit module



Specifications are subject to change without prior notice

Lithium Cylindrical Batteries

No.	Model No.	Dimension(mm)		Capacity(mAh)	Continuous charge current	Continuous discharge current	Burst discharge current	weight (g)	Voltage (V)	Cycle life DOD80%
		Φ	H							
1	LCR14430	13.95	42.5	600	0.5C	0.5C	1C	16.5	3.7	≥ 500
		13.95	42.5	650	0.5C	0.5C	1C	16.9	3.7	≥ 500
2	LCR14500	13.95	48.8	500	0.5C	0.5C	1C	19	3.7	≥ 500
		13.95	48.8	800	0.5C	0.5C	1C	19.8	3.7	≥ 500
3	LCR14650	13.95	64.2	1050	0.5C	0.5C	1C	26.5	3.7	≥ 500
4	LCR18490	18.05	48.8	1000	0.5C	0.5C	1C	31.6	3.7	≥ 500
		18.05	48.8	1400	0.5C	0.5C	1C	33.4	3.7	≥ 500
5	LCR18650	18.05	64.8	1500	0.5C	0.5C	1C	35.5	3.7	≥ 500
		18.05	64.8	2000	0.5C	0.5C	1C	37.5	3.7	≥ 500
		18.05	64.8	2200	0.5C	0.5C	1C	43.5	3.7	≥ 500
		18.05	64.8	2600	0.5C	0.5C	1C	45	3.7	≥ 500
6	LCR26650	26.5	65.3	3000	0.5C	0.5C	1C	89	3.7	≥ 500
		26.5	65.3	4000	0.5C	0.5C	1C	92	3.7	≥ 500



Lithium ion Battery Performance

Model: LCR36V20Ah

Specification

Nominal Voltage	36V
Number of cell	10s9p LCR18650-2.2AH
Nominal Capacity	20AH(0.5C discharge to 27.5V)
Weight	Approx. 3.9Kg
Dimensions	Approx. 70x165x185mm(customized)
Voltage window/V	42 to 27.5
Max continue discharge current	20A
Max charge current	20A
Max pulse discharge current	60A 10Sec
Input/DC 5mm	Charger and connectors are available
Output/ Two lead wire	

operating conditions

Cycle life (+25°C 0.2C 100%DOD)	500 Times
Operating temperature	Discharge-20°C to 60°C Charge-0°C to 60°C
Storage temperature	0°C to 60°C
Storage duration	12 months at 25°C
Safety standard	UI1642 at cell level

Features

- ★ Used alone
- ★ Eco-friendly and long lifespan
- ★ Low self- discharge
- ★ High energy density
- ★ Excellent performance in all the operating temperature
- ★ Automatic protection with battery management system internally
Over charge, over discharge, Over load, Over short circuit protection
- ★ industrial leading packing technology ensures the cells have a precise conformance and a stable performance

Applications

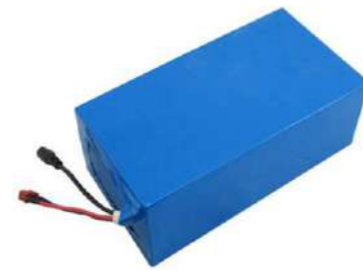
- ◆ Electric bicycle (high load)
- ◆ Electro-tricycle
- ◆ Golf cart
- ◆ Sightseeing car
- ◆ Household energy storage system
- ◆ Electric cleaning vehicles, etc

Certificate

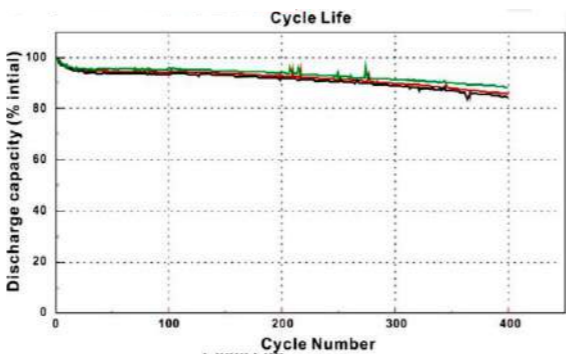
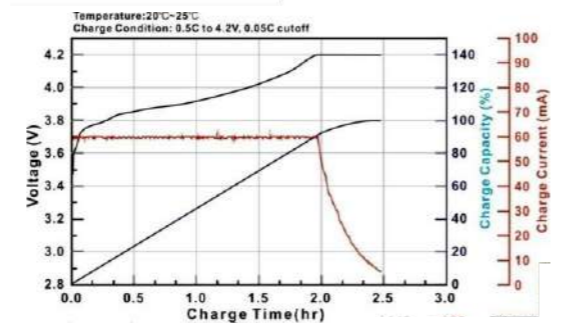
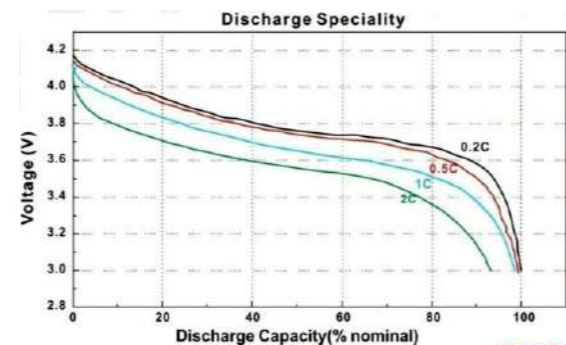
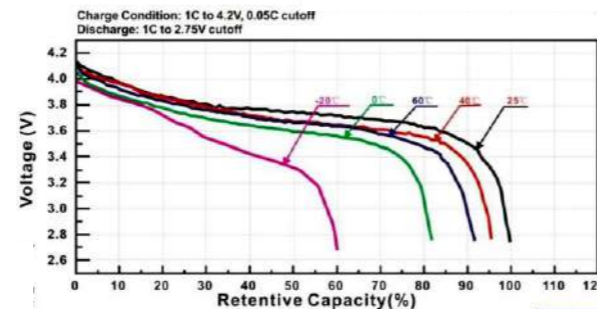
- ◆ CE/RoHS Directive-compliant/msds/FCC

Caution

- ◆ Do not disassemble, short circuit or dispose of in fire
- ◆ Do not use or store the battery where is exposed to extremely hot, such as under window of a car in direct sunlight in a hot day. Otherwise, the battery may be overheated. This can also reduce battery performance and/or shorten service life



Performance curve/cell



Lithium Phosphate Batteries

No.	Model No.	Dimension(mm)		Capacity(mAh)	Continuous charge current	Continuous discharge current	Burst discharge current	weight (g)	Voltage (V)	Cycle life DOD80%
		Φ	H							
1	LFP14500	14.2	50.2	110	0.5C	0.5C	3C	16.4	3.2	≥2000
				600	0.5C	0.5C	3C	18	3.2	≥2000
2	LFP16340	16.2	34.2	400	0.5C	0.5C	3C	13.5	3.2	≥2000
3	LFP18490	18.1	49.1	650	0.5C	0.5C	3C	21	3.2	≥2000
4	LFP18650	18.5	65.3	1400	0.5C	0.5C	3C	42	3.2	≥2000
5	LFP18650	18.5	65.3	1500	0.5C	0.5C	3C	42	3.2	≥2000
6	LFP22430	22.5	43.3	1200	0.5C	0.5C	3C	47	3.2	≥2000
7	LFP22650	22.5	65.3	1800	0.5C	0.5C	3C	60	3.2	≥2000
				1900	0.5C	0.5C	3C	62	3.2	≥2000
				2000	0.5C	0.5C	3C	63	3.2	≥2000
8	LFP26430	26.5	43.3	1600	0.5C	0.5C	3C	50	3.2	≥2000
				2000	0.5C	0.5C	3C	56	3.2	≥2000
9	LFP26500	26.5	50.3	2100	0.5C	0.5C	3C	57	3.2	≥2000
				2200	0.5C	0.5C	3C	58	3.2	≥2000
10	LFP26650	26.5	65.3	3100	0.5C	0.5C	3C	86	3.2	≥2000
				3200	0.5C	0.5C	3C	88	3.2	≥2000
				3400	0.5C	0.5C	3C	90	3.2	≥2000



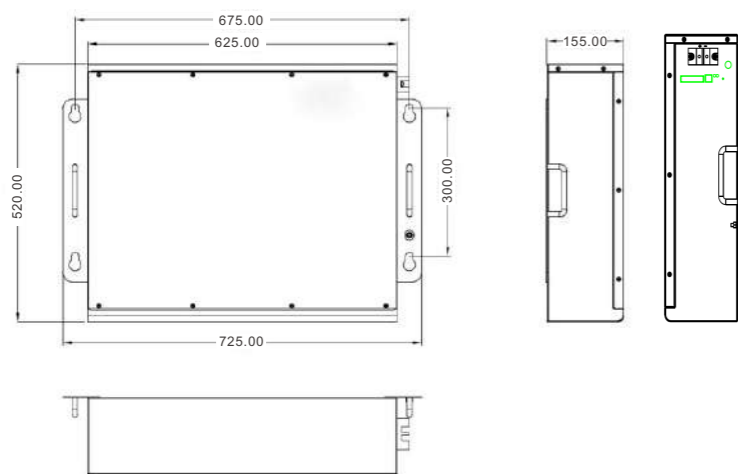
Lithium Phosphate Battery Performance

Model : LFP48V100Ah

Specification

Nominal Voltage	48V100AH
Casing Material	Steel case
Assembly	16s 2p single cell capacity 50Ah
Rated Voltage	51.2V
Standard capacity	100Ah
Standard charging Voltage	57.6V
Cut-off Voltage	46.4V
Protection Function	OVP/OCP/SCP/OTP
Communication interface	RS485/MODbus
Max charge & Discharge current	50A
Battery module dimension	725*520*155mm
Battery weight(approx)	64.0±0.5kg
Energy density	800Wh/kg
Impedance (Max at 1000Hz)	<60mΩ
Operating temperature	Discharge-20°C to 60°C Charge-0°C to 60°C
Storage temperature range	less than 18 months at -20°C to 25°C less than 12 months at 25°C to 35°C less than 3 months at 35°C to 60°C

Drawing for battery module



What Not To Do

1. DO NOT throw the battery into fire or water, DO NOT treat the battery
2. DO NOT use the battery when it become hot, bulges, deforms or leaks.
3. DO NOT puncture the battery by nail or other sharp objects.
4. DO NOT throw stamp on, impact or hit the battery.
5. DO NOT open or try to repair the battery when it is defective Warranty invalid if the battery repaired or disassembled..

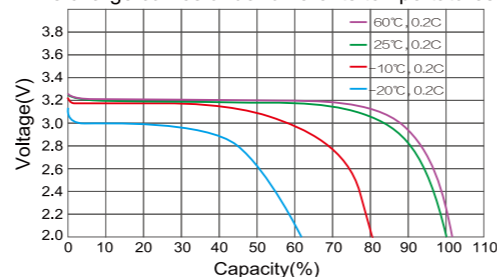
Precautions

1. Batteries are half charged before shipment please charge the battery before use of test.
2. If you need storage the battery for a long time, please charge and discharge the battery every three months to ensure the best performance, and the best state of charge for storage is between 50%-60%
3. Please use the battery in the temperature range which defined in the manual.
4. Don't use the battery if it's hot, bulge, or smell abnormal and so on, and report to MOTOMA after-sale dept, immediately.

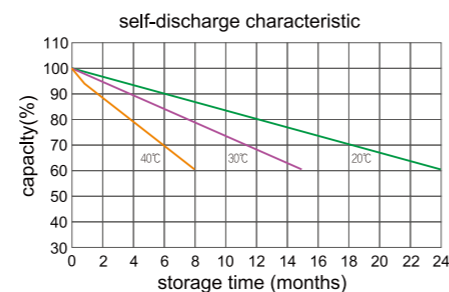
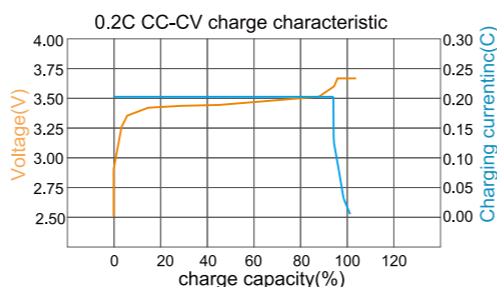
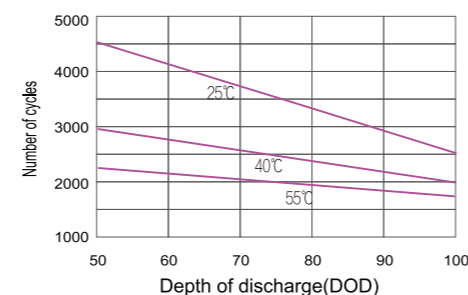


Performance curve/cell

Dis charge curves under differents temperatures



Cycle life versus DOD and temperature at 0.2C



Recommendation

Advantages Of Li-ion Battery

- 1. High Energy Density**
High Energy Density The volumetric energy density of MOTOMA Li-ion Battery is approx. 4 times that of the Ni-Cd, 2 times that of the Ni-MH and 5 times that of the lead acid rechargeable Battery.
- 2. High Output Voltage**
The operating output voltage is 3.6V, three times higher than that of Ni-Cd and Ni-MH cells.
- 3. Long Cycle Life**
Recharging properties allow more than 500 repeated charge/discharge cycles.
- 4. Pollution-free**
The lithium battery does not contain any polluting substances such as cadmium, lead, mercury, etc.
- 7. Fast Charge Capacity**
The lithium-ion battery can be fully charged in 2 to 3 hours, using a constant-current / constant-voltage (CC/CV) type dedicated charge with a rated voltage of 4.2V per cell.
- 8. Excellent Security**
Each cell has an additional safety device to ensure its security as proved by the following safety tests:
 - » Destruction test
 - » Over charge test
 - » Needle penetration test
 - » High temperature test
 - » Burning test
 - » Short circuit test



Charging

- **Charge voltage**
For a lithium battery pack, set the charging voltage to 1.0V × number of cells connected in series + 0.5V, and the charging voltage should to 4.2V × number of cells connected in series at the maxi. It is absolutely prohibited to charge any battery having a voltage less than 1.0V per single cell. Do not exceed the specified charging voltage 4.2V × number of cells connected in series.
- **Charge current**
Charge the Lithium battery at the specified charging current (1.5CmA) or less.
- **Charge temperature**
Charge the Lithium battery within a temperature range of 0 to 45°C. Due consideration should also be given to the arrangement of the battery pack so that it is in that temperature range even though it is affected by heat generated in the battery charger
- **Reverse charge**
The battery must be protected from reverse charge.

Discharging

- **Discharge current**
Discharge the Lithium battery at the specified discharge current (1.5CmA) or less. In the case of a pulse discharge, Set the mean current to 1.0CmA or less.
- **Discharge temperature**
Discharge the Lithium battery within a temperature range of -20 to 60°C.
- **Over discharge**
A leak current to the battery charge or similar causes may over-discharge the Lithium-ion battery. Efforts should therefore be made to minimize leak current of battery charger.

Safety Precaution

- Do not dispose of in fire or apply extreme heat.
- Do not disassemble or modify the battery.
- Do not short-circuit the battery.
- Do not put the battery into water.
- Do not directly solder onto the battery.
- Do not mix Lithium ion battery with primary cells like dry batteries, other type of rechargeable batteries like Ni-Cd or Ni-MH batteries, or batteries of different capacities/voltage/makes.
- Do not subject the battery to strong mechanical shocks.
- Do not clean the battery with water or organic solvent. Clean with dry, soft cloth only.
- If any odd smell or excessive heat is noticed, stop using the battery immediately.
- If any cracks, deformation or other damages are found on the battery container or cover, or if any leakage of the electrolyte is found, stop using the battery immediately.